

Slow Speed Shaft Direction	
Horizontal, slow speed shaft level	H
Vertical, slow speed shaft down	V
Vertical, slow speed shaft up	W
Universal mounting	N

Mounting style	
Foot	H
V flange	V
Flange	F

Type of Input	
Gearmotor	M
With adaptor	JM

Special Specifications	
Standard specification	blank
Special specification	S

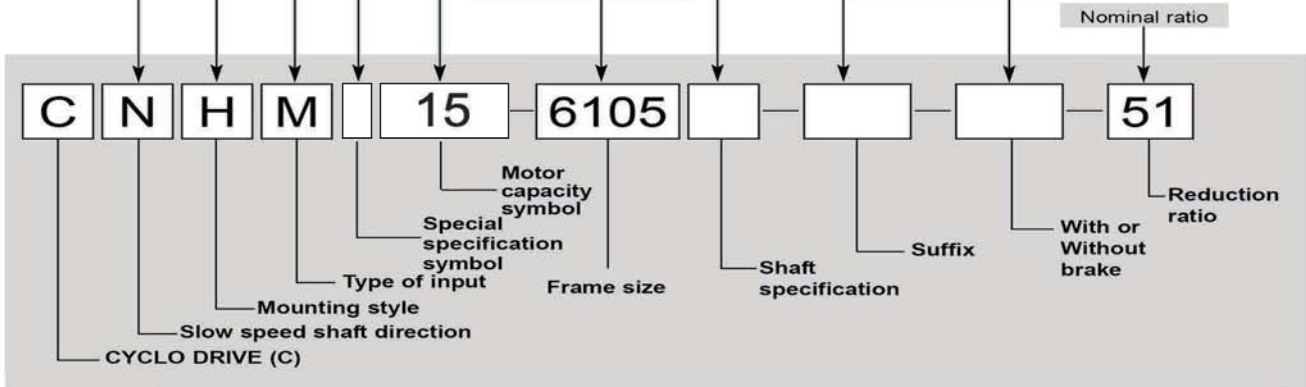
		Motor Capacity Symbol						
4P	Capacity symbol	01	02	03	05	08	1	
	kW (HP)	0.1 (1/8)	0.2 (1/4)	0.25 (1/3)	0.4 (1/2)	0.55 (3/4)	0.75 (1)	
	Capacity symbol	1H	2	3	4	5	8	
	kW (HP)	1.1 (1.5)	1.5 (2)	2.2 (3)	3.0 (4)	3.7 (5)	5.5 (7.5)	
	Capacity symbol	10	15	20	25	30	40	
	kW (HP)	7.5 (10)	11 (15)	15 (20)	18.5 (25)	22 (30)	30 (40)	
6P	Capacity symbol	50	60	75	100			
	kW (HP)	37 (50)	45 (60)	55 (75)	75 (100)			
	Capacity symbol	016	026	036	056	086	16	
	kW (HP)	0.1 (1/8)	0.2 (1/4)	0.25 (1/3)	0.4 (1/2)	0.55 (3/4)	0.75 (1)	
	Capacity symbol	1H6	26	36	46	56	86	
	kW (HP)	1.1 (1.5)	1.5 (2)	2.2 (3)	3.0 (4)	3.7 (5)	5.5 (7.5)	
6P	Capacity symbol	106	156	206	256	306	406	
	kW (HP)	7.5 (10)	11 (15)	15 (20)	18.5 (25)	22 (30)	30 (40)	
	Capacity symbol	506	606	756	1006	1256	1506	
	kW (HP)	37 (50)	45 (60)	55 (75)	75 (100)	90 (125)	110 (150)	
	Capacity symbol	1756						
	kW (HP)	132 (175)						

Shaft specification	
Metric JIS (Standard)	-
Inch size	Y
Metric DIN	G

Suffix		
Standard	-	Low Backlash
Light Heavy Radial	R1	With AF (inverter) motor
High Cap. Brg. Ductile Casing	R2	Servo Motor
Baseplate	BP	DC Motor
HH Type Ceiling	H1	High Efficiency Motor
Modification Left Wall	H2	Torque Limiter
Modification Right Wall	H3	

With or Without Brake	
Without brake	-
With brake	B

Frame size  
(Refer to Selection  
Tables starting from  
page B-13.)

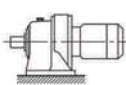


### Product and Nomenclature Symbol Examples (Gearmotor)

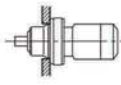
Standard and various application products of CYCLO GEARMOTOR are classified by their nomenclature symbol as below. Refer to specific catalogs or consult us for details on our application products.

### CYCLO® GEARMOTORS

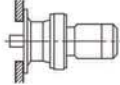
CHHM  
(CNHM)



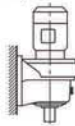
CHFM  
(CNFM)



CHVM  
(CNVM)



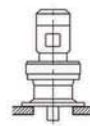
CVHM  
(CNHM)



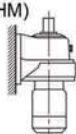
CVFM  
(CNFM)



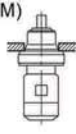
CVVM  
(CNVM)



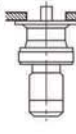
CWHM  
(CNHM)



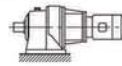
CWFM  
(CNFM)



CWVM  
(CNVM)

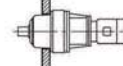


CHHJM  
(CNHJM)



With Adaptor

CHFJM  
(CNFJM)



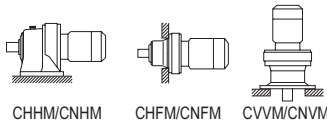
With Adaptor

CVVJM  
(CNVJM)



With Adaptor

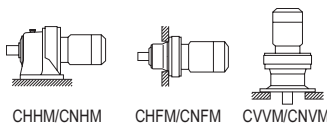
## Selection Tables Gearmotors #CNHM15, #CHHM15, #CNVM15, #CVVM15



<b>7.5 kW</b>		Hz		50Hz		60Hz	
		P		4	6	4	6
		n <sub>1</sub>	r/min	1450	980	1750	1165

50Hz						60Hz					Nomenclature			Page of Dimension Sheet			
Output Speed n <sub>2</sub> r/min	Output Torque Tout		Allowable Radial Load Pro		SF	Output Speed n <sub>2</sub> r/min	Output Torque Tout		Allowable Radial Load Pro		SF	Input Capacity Symbol	Frame Size	Reduction Ratio	CNHM	CNFM	CNVM
	N-m	kgf-m	N	kgf			N-m	kgf-m	N	kgf							
1.72	25800	2630	208000	21200	*1	2.08	25800	2630	208000	21200	*1	10 -	6245DA	- 841	B-114	B-131	B-150
			258000	26300	0.87				258000	26300	1.05	10 -	6255DA	- 841	B-115	B-132	B-151
	37400	3810	276000	28100	1.23		31000	3160	276000	28100	1.48	10 -	6265DA	- 841	B-115	B-132	B-151
1.45			248000	25300	1.82	1.74			248000	25300	2.20	10 -	6275DA	- 841	B-115	-	B-151
	34500	3520	258000	26300	*1		34500	3520	258000	26300	*1	10 -	6255DA	- 1003	B-115	B-132	B-151
	44600	4550	<b>276000</b>	<b>28100</b>	<b>1.03</b>		36900	3770	<b>276000</b>	<b>28100</b>	<b>1.25</b>	<b>10 -</b>	<b>6265DA</b>	<b>- 1003</b>	<b>B-115</b>	<b>B-132</b>	<b>B-151</b>
1.16			248000	25300	1.53	1.40			248000	25300	1.85	10 -	6275DA	- 1003	B-115	-	B-151
	34500	3520	258000	26300	*1		34500	3520	258000	26300	*1	10 -	6255DA	- 1247	B-115	B-132	B-151
	46000	4690	276000	28100	*1		46000	4690	276000	28100	*1	10 -	6265DA	- 1247	B-115	B-132	B-151
0.980			276000	28100	0.83	1.18			276000	28100	1.00	10 -	6265DA	- 1247	B-115	B-132	B-151
	55400	5650	248000	25300	1.23		45900	4680	248000	25300	1.48	10 -	6275DA	- 1247	B-115	-	B-151
	44000	4490	276000	28100	*1		44000	4490	276000	28100	*1	10 -	6265DA	- 1479	B-115	B-132	B-151
	65800	6700	<b>247000</b>	<b>25200</b>	<b>1.04</b>		<b>54500</b>	<b>5550</b>	<b>248000</b>	<b>25300</b>	<b>1.25</b>	<b>10 -</b>	<b>6275DA</b>	<b>- 1479</b>	<b>B-115</b>	-	<b>B-151</b>
0.784	82200	8380	248000	25300	0.83	0.946	68100	6940	248000	25300	1.00	10 -	6275DA	- 1849	B-115	-	B-151
0.702	68200	6950	248000	25300	*1	0.847	68200	6950	248000	25300	*1	10 -	6275DA	- 2065	B-115	-	B-151
0.572	68200	6950	248000	25300	*1	0.690	68200	6950	248000	25300	*1	10 -	6275DA	- 2537	B-115	-	B-151
0.476	68200	6950	245000	25000	*1	0.575	68200	6950	245000	25000	*1	10 -	6275DA	- 3045	B-115	-	B-151
0.417	68200	6950	248000	25300	*1	0.503	68200	6950	248000	25300	*1	10 -	6275DA	- 3481	B-115	-	B-151
0.327	68200	6950	245000	25000	*1	0.394	68200	6950	245000	25000	*1	10 -	6275DA	- 4437	B-115	-	B-151
0.282	68200	6950	245000	25000	*1	0.341	68200	6950	245000	25000	*1	10 -	6275DA	- 5133	B-115	-	B-151
0.235	68200	6950	245000	25000	*1	0.283	68200	6950	245000	25000	*1	10 -	6275DA	- 6177	B-115	-	B-151
0.192	68200	6950	245000	25000	*1	0.231	68200	6950	245000	25000	*1	10 -	6275DA	- 7569	B-115	-	B-151

GEARMOTORS

Selection Tables  
7.5 kW, 11 kW

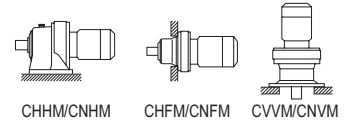
<b>11 kW</b>		Hz		50Hz		60Hz	
		P		4	6	4	6
		n <sub>1</sub>	r/min	1450	980	1750	1165

50Hz						60Hz					Nomenclature			Page of Dimension Sheet			
Output Speed n <sub>2</sub> r/min	Output Torque Tout		Alloeeable Radial Load Pro		SF	Output Speed n <sub>2</sub> r/min	Output Torque Tout		Alloeeable Radial Load Pro		SF	Input Capacity Symbol	Frame Size	Reduction Ratio	CNHM	CNFM	CNVM
	N-m	kgf-m	N	kgf			N-m	kgf-m	N	kgf							
242	413	42.1	5840	595	1.03	292	342	34.9	5540	564	1.03	15 -	6135	- 6	B-102	B-118	B-137
			9270	945	1.18				8780	895	1.18	15 -	6140	- 6	B-102	B-118	B-137
			9270	945	1.37				8780	895	1.37	15 -	6145	- 6	B-102	B-118	B-137
			10400	1060	1.85				9760	995	1.85	15 -	6160	- 6	B-103	B-119	B-138
			10400	1060	2.19				9760	995	2.19	15 -	6165	- 6	B-103	B-119	B-138
			11700	1190	2.51				11000	1120	2.51	15 -	6170	- 6	B-103	B-119	B-138
			11700	1190	2.74			11000	1120	2.74	15 -	6175	- 6	B-103	B-119	B-138	
181	551	56.1	6480	661	1.03	219	456	46.5	6150	627	1.03	15 -	6135	- 8	B-102	B-118	B-137
			10300	1050	1.18				9730	992	1.18	15 -	6140	- 8	B-102	B-118	B-137
			10300	1050	1.37				9730	992	1.37	15 -	6145	- 8	B-102	B-118	B-137
			11600	1180	1.79				10900	1110	1.79	15 -	6160	- 8	B-103	B-119	B-138
			11600	1180	2.19				10900	1110	2.19	15 -	6165	- 8	B-103	B-119	B-138
			12900	1320	2.51				12200	1240	2.51	15 -	6170	- 8	B-103	B-119	B-138
			12900	1320	2.74			12200	1240	2.74	15 -	6175	- 8	B-103	B-119	B-138	

- "\*2" indicate models manufactured with reducer and motor separately mounted on a common baseplate (horizontal shaft direction) or on an adaptor (vertical shaft direction). Consult us for details, including dimensions.
- Allowable radial load (Pro) is the value at the midpoint of the slow speed shaft.
- "\*3" indicate models with reduction ratios equal to nominal ratio. Refer to Table A-3 "6000SK Series (Actual Reduction Ratio)" on page A-4 for actual reduction ratio. Indicated reduction ratio is the same as actual reduction ratio for other models.
- Maintain torque load during operation within "Output torque" in the table for models with "\*1" in the SF column. They cannot be operated with 100% motor rating.

# Selection Tables Gearmotors #CNHM15, #CHHM15, #CNVM15, #CVVM15

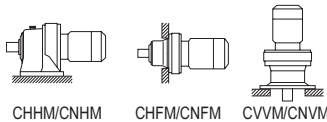
11 kW	Hz		50Hz		60Hz	
	P		4	6	4	6
	n <sub>1</sub>	r/min	1450	980	1750	1165



50Hz					60Hz					Nomenclature			Page of Dimension Sheet				
Output Speed n <sub>2</sub> r/min	Output Torque Tout N·m	kgf·m	Allowable Radial Load Pro N	SF	Output Speed n <sub>2</sub> r/min	Output Torque Tout N·m	kgf·m	Allowable Radial Load Pro N	SF	Input Capacity Symbol	Frame Size	Reduction Ratio	CNHM CHHM	CNFM CHFM	CNVM CVVM		
132	757	77.2	<b>7360</b>	<b>1.03</b>	159	627	63.9	<b>6980</b>	<b>1.03</b>	15	6135	- 11	<b>B-102</b>	<b>B-118</b>	<b>B-137</b>		
			11500	1.18				10900	1.18				6140	- 11	B-102	B-118	B-137
			11500	1.37				10900	1.37				6145	- 11	B-102	B-118	B-137
			13100	1.79				12300	1.79				6160	- 11	B-103	B-119	B-138
			13100	2.19				12300	2.19				6165	- 11	B-103	B-119	B-138
			14900	2.51				14000	2.51				6170	- 11	B-103	B-119	B-138
112	895	91.2	<b>11700</b>	<b>1.18</b>	135	741	75.6	<b>11100</b>	<b>1.18</b>	15	6140	- 13	<b>B-102</b>	<b>B-118</b>	<b>B-137</b>		
			11700	1.37				11100	1.37				6145	- 13	B-102	B-118	B-137
			13700	1.79				12900	1.79				6160	- 13	B-103	B-119	B-138
			13700	2.05				12900	2.05				6165	- 13	B-103	B-119	B-138
			15500	2.48				14600	2.48				6170	- 13	B-103	B-119	B-138
			15500	2.74				14600	2.74				6175	- 13	B-103	B-119	B-138
96.7	1030	105	<b>12300</b>	<b>1.09</b>	117	855	87.2	<b>11600</b>	<b>1.09</b>	15	6140	- 15	<b>B-102</b>	<b>B-118</b>	<b>B-137</b>		
			12300	1.32				11600	1.32				6145	- 15	B-102	B-118	B-137
			14500	1.70				13600	1.70				6160	- 15	B-103	B-119	B-138
			14500	2.04				13600	2.04				6165	- 15	B-103	B-119	B-138
			16300	2.32				15400	2.32				6170	- 15	B-103	B-119	B-138
			16300	2.74				15400	2.74				6175	- 15	B-103	B-119	B-138
85.3	1170	119	<b>12800</b>	<b>1.09</b>	103	969	98.8	<b>12100</b>	<b>1.09</b>	15	6145	- 17	<b>B-102</b>	<b>B-118</b>	<b>B-137</b>		
			14900	1.19				14100	1.19				6160	- 17	B-103	B-119	B-138
			14900	1.71				14100	1.71				6165	- 17	B-103	B-119	B-138
			16900	1.79				16000	1.79				6170	- 17	B-103	B-119	B-138
			16900	2.19				16000	2.19				6175	- 17	B-103	B-119	B-138
			22900	2.78				21600	2.78				6180	- 17	B-104	B-120	B-139
69.0	1450	147	<b>13600</b>	<b>0.86</b>	83.3	1200	122	<b>12900</b>	<b>1.00</b>	15	6145	- 21	<b>B-102</b>	<b>B-118</b>	<b>B-137</b>		
			<b>15900</b>	<b>1.17</b>				<b>15000</b>	<b>1.17</b>				<b>6160</b>	- 21	<b>B-103</b>	<b>B-119</b>	<b>B-138</b>
			15900	1.45				15000	1.45				6165	- 21	B-103	B-119	B-138
			18200	1.69				17200	1.77				6170	- 21	B-103	B-119	B-138
			18200	2.15				17200	2.19				6175	- 21	B-103	B-119	B-138
			24500	2.73				23100	2.73				6180	- 21	B-104	B-120	B-139
58.0	1720	175	16600	1.22	70.0	1430	145	15700	1.37	15	6165	- 25	B-103	B-119	B-138		
			18800	1.42				17800	1.44				6170	- 25	B-103	B-119	B-138
			18800	1.77				17800	1.77				6175	- 25	B-103	B-119	B-138
			25500	2.19				24000	2.19				6180	- 25	B-104	B-120	B-139
			25500	2.74				24000	2.74				6185	- 25	B-104	B-120	B-139
50.0	2000	203	<b>17200</b>	<b>1.04</b>	60.3	1650	169	<b>16300</b>	<b>1.04</b>	15	6165	- 29	<b>B-103</b>	<b>B-119</b>	<b>B-138</b>		
			19800	1.23				18700	1.30				6170	- 29	B-103	B-119	B-138
			19800	1.58				18700	1.71				6175	- 29	B-103	B-119	B-138
			26600	1.77				25100	1.77				6180	- 29	B-104	B-120	B-139
			26600	2.19				25100	2.19				6185	- 29	B-104	B-120	B-139
			37500	2.79				35300	2.79				6190	- 29	B-104	B-120	B-139
41.4	2410	246	18100	0.87	50.0	2000	203	17100	1.04	15	6165	- 35	B-103	B-119	B-138		
			<b>20900</b>	<b>1.02</b>				<b>19700</b>	<b>1.09</b>				<b>6170</b>	- 35	<b>B-103</b>	<b>B-119</b>	<b>B-138</b>
			20900	1.31				19700	1.37				6175	- 35	B-103	B-119	B-138
			28400	1.68				26700	1.71				6180	- 35	B-104	B-120	B-139
			28400	2.05				26700	2.05				6185	- 35	B-104	B-120	B-139
			39600	2.21				37300	2.21				6190	- 35	B-104	B-120	B-139
33.7	2960	302	<b>22100</b>	<b>1.03</b>	40.7	2450	250	<b>20900</b>	<b>1.03</b>	15	6175	- 43	<b>B-103</b>	<b>B-119</b>	<b>B-138</b>		
			30300	1.37				28600	1.37				6180	- 43	B-104	B-120	B-139
			30300	1.69				28600	1.71				6185	- 43	B-104	B-120	B-139
			42600	1.90				40100	1.90				6190	- 43	B-104	B-120	B-139
			42600	2.46				40100	2.74				6195	- 43	B-104	B-120	B-139
			77700	2.89				73500	2.89				6205	- 43	B-105	B-121	B-140

1. Combinations in **bold** are the recommended models for operations for 10 hours/day with uniform load (service factor is about 1.0 for motor rating at 50Hz).
2. Motor slippage may affect n<sub>1</sub> and n<sub>2</sub>. Refer to technical data for details.
3. CNHM, CHHM, CNFM, CHFM, CNVM, and CVVM indicate types. Refer to page B-10 for details.
4. Lubrication method is different for each model. Refer to "Lubrication" section in page F-4~F-5 for details.
5. "6" at the end of "input capacity symbol" indicates models with 6P motor. Other models come with 4P motor.

## Selection Tables Gearmotors #CNHM15, #CHHM15, #CNVM15, #CVVM15



<b>11 kW</b>	Hz		50Hz		60Hz	
	P		4	6	4	6
	n <sub>1</sub>	r/min	1450	980	1750	1165

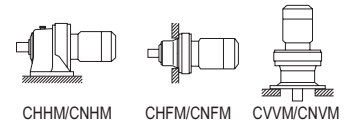
n<sub>1</sub>: Motor Speed

50Hz					60Hz					Nomenclature			Page of Dimension Sheet								
Output Speed n <sub>2</sub> r/min	Output Torque Tout N-m	kgf-m	Allowable Radial Load Pro N	kgf	SF	Output Speed n <sub>2</sub> r/min	Output Torque Tout N-m	kgf-m	Allowable Radial Load Pro N	kgf	SF	Input Capacity Symbol	Frame Size	Reduction Ratio	CNHM	CNFM	CNVM	CHHM	CHFM	CVVM	
28.4	3510	358	22900	2330	0.90	34.3	2910	296	21700	2210	1.03	15 -	6175	- 51	B-103	B-119	B-138				
			<b>31300</b>	<b>3200</b>	<b>1.09</b>				<b>29600</b>	<b>3010</b>	<b>1.09</b>	<b>15 -</b>	<b>6180</b>	<b>- 51</b>	<b>B-104</b>	<b>B-120</b>	<b>B-139</b>				
			31300	3200	1.37				29600	3010	1.37	15 -	6185	- 51	B-104	B-120	B-139				
			44400	4530	1.65				41900	4270	1.65	15 -	6190	- 51	B-104	B-120	B-139				
24.6	4060	414	44400	4530	1.90	29.7	3360	343	41900	4270	1.90	15 -	6195	- 51	B-104	B-120	B-139				
			<b>32700</b>	<b>3330</b>	<b>1.09</b>				<b>30900</b>	<b>3150</b>	<b>1.09</b>	<b>15 -</b>	<b>6185</b>	<b>- 59</b>	<b>B-104</b>	<b>B-120</b>	<b>B-139</b>				
			46400	4730	1.39				43700	4460	1.39	15 -	6190	- 59	B-104	B-120	B-139				
			46400	4730	1.71				43700	4460	1.71	15 -	6195	- 59	B-104	B-120	B-139				
20.4	4890	498	84100	8570	2.05	24.6	4050	413	79900	8150	2.05	15 -	6205	- 59	B-105	B-121	B-140				
			<b>49100</b>	<b>5010</b>	<b>1.23</b>				<b>46300</b>	<b>4720</b>	<b>1.23</b>	<b>15 -</b>	<b>6190</b>	<b>- 71</b>	<b>B-104</b>	<b>B-120</b>	<b>B-139</b>				
			34500	3520	0.89				32700	3330	0.89	15 -	6185	- 71	B-104	B-120	B-139				
			49100	5010	1.42				46300	4720	1.42	15 -	6195	- 71	B-104	B-120	B-139				
16.7	5990	610	<b>52700</b>	<b>5380</b>	<b>1.06</b>	20.1	4960	506	<b>49700</b>	<b>5070</b>	<b>1.07</b>	<b>15 -</b>	<b>6190</b>	<b>- 87</b>	<b>B-104</b>	<b>B-120</b>	<b>B-139</b>				
			52700	5380	1.24				49700	5070	1.24	15 -	6195	- 87	B-104	B-120	B-139				
			84100	8570	1.45				84100	8570	1.45	15 -	6205	- 87	B-105	B-121	B-140				
			96600	9850	1.79				91500	9320	1.95	15 -	6215	- 87	B-106	B-121	B-140				
13.9	4060	414	40200	4100	*1	16.8	4060	414	37700	3840	*1	15 -	6180DB	- 104	B-111	B-127	B-146				
			4900	500	39900				4060	*1	4900	500	37300	3800	*1	15 -	6185DB	- 104	B-111	B-127	B-146
			6780	691	<b>55600</b>				<b>5670</b>	<b>1.08</b>	5620	573	<b>52500</b>	<b>5360</b>	<b>1.08</b>	<b>15 -</b>	<b>6195DB</b>	<b>- 104</b>	<b>B-112</b>	<b>B-128</b>	<b>B-147</b>
12.0	7890	804	4810	490	41700	4250	*1	14.5	6540	666	4810	490	40000	4070	*1	15 -	6185DB	- 121	B-111	B-127	B-146
			6380	650	59000	6010	*1				6380	650	55900	5700	*1	15 -	6190DB	- 121	B-112	B-128	B-147
			59000	6010	0.96	55900	5700				1.08	15 -	6195DB	- 121	B-112	B-128	B-147				
			<b>84100</b>	<b>8570</b>	<b>1.08</b>	<b>84100</b>	<b>8570</b>				<b>1.08</b>	<b>15 -</b>	<b>6205DB</b>	<b>- 121</b>	<b>B-112</b>	<b>B-129</b>	<b>B-148</b>				
			104000	10600	1.44	102000	10400				1.74	15 -	6215DB	- 121	B-113	B-130	B-149				
			114000	11600	1.71	108000	11000				2.06	15 -	6225DB	- 121	B-113	B-130	B-149				
			143000	14600	2.31	135000	13800				2.31	15 -	6235DA	- 121	B-114	B-131	B-150				
			143000	14600	2.37	135000	13800				2.86	15 -	6235DB	- 121	B-114	B-131	B-150				
159000	16200	2.60	151000	15400	3.14	15 -	6245DB	- 121	B-114	B-131	B-150										
195000	19900	2.89	184000	18800	2.89	15 -	6255DA	- 121	B-115	B-132	B-151										
10.1	6380	650	58700	5980	*1	12.2	6380	650	58400	5950	*1	15 -	6190DB	- 143	B-112	B-128	B-147				
			7630	778	58200				5940	*1	7630	778	57900	5900	*1	15 -	6195DB	- 143	B-112	B-128	B-147
			9320	950	57600				5870	0.82	7730	788	57900	5900	0.98	15 -	6195DB	- 143	B-112	B-128	B-147
8.79	10800	1100	6380	650	58900	6000	*1	10.6	8910	909	6380	650	58900	6000	*1	15 -	6190DB	- 165	B-112	B-128	B-147
			7910	806	58300	5940	*1				7910	806	58300	5940	*1	15 -	6195DB	- 165	B-112	B-128	B-147
			84100	8570	0.86	84100	8570				1.04	15 -	6205DB	- 165	B-112	B-129	B-148				
			<b>104000</b>	<b>10600</b>	<b>1.08</b>	<b>104000</b>	<b>10600</b>				<b>1.08</b>	<b>15 -</b>	<b>6215DA</b>	<b>- 165</b>	<b>B-112</b>	<b>B-130</b>	<b>B-148</b>				
			104000	10600	1.13	104000	10600				1.37	15 -	6215DB	- 165	B-113	B-130	B-149				
			123000	12600	1.35	117000	11900				1.62	15 -	6225DB	- 165	B-113	B-130	B-149				
			153000	15600	1.82	145000	14800				2.20	15 -	6235DA	- 165	B-114	B-131	B-150				
			171000	17400	2.31	162000	16500				2.31	15 -	6245DA	- 165	B-114	B-131	B-150				
171000	17400	2.44	162000	16500	2.94	15 -	6245DB	- 165	B-114	B-131	B-150										
209000	21300	2.89	198000	20200	2.89	15 -	6255DA	- 165	B-115	B-132	B-151										
209000	21300	2.90	198000	20200	3.50	15 -	6255DB	- 165	B-115	B-132	B-151										
7.44	12700	1300	7910	806	58300	5940	*1	8.79	10500	1070	7910	806	58300	5940	*1	15 -	6195DB	- 195	B-112	B-128	B-147
			9270	945	84100	8570	*1				9270	945	84100	8570	*1	15 -	6205DB	- 195	B-112	B-129	B-148
			104000	10600	0.96	104000	10600				1.08	15 -	6215DA	- 195	B-112	B-130	B-148				
			104000	10600	0.96	104000	10600				1.16	15 -	6215DB	- 195	B-113	B-130	B-149				
			129000	13200	0.98	122000	12500				1.08	15 -	6225DA	- 195	B-113	B-130	B-149				
			129000	13200	1.14	122000	12500				1.37	15 -	6225DB	- 195	B-113	B-130	B-149				
			161000	16400	1.54	152000	15500				1.86	15 -	6235DA	- 195	B-114	B-131	B-150				
			180000	18300	2.06	170000	17300				2.17	15 -	6245DA	- 195	B-114	B-131	B-150				
			180000	18300	2.06	170000	17300				2.49	15 -	6245DB	- 195	B-114	B-131	B-150				
			220000	22400	2.45	208000	21200				2.89	15 -	6255DA	- 195	B-115	B-132	B-151				
220000	22400	2.45	208000	21200	2.96	15 -	6255DB	- 195	B-115	B-132	B-151										

- "\*2" indicate models manufactured with reducer and motor separately mounted on a common baseplate (horizontal shaft direction) or on an adaptor (vertical shaft direction). Consult us for details, including dimensions.
- Allowable radial load (Pro) is the value at the midpoint of the slow speed shaft.
- "\*3" indicate models with reduction ratios equal to nominal ratio. Refer to Table A-3 "6000SK Series (Actual Reduction Ratio)" on page A-4 for actual reduction ratio. Indicated reduction ratio is the same as actual reduction ratio for other models.
- Maintain torque load during operation within "Output torque" in the table for models with "\*" in the SF column. They cannot be operated with 100% motor rating.



# Selection Tables Gearmotors #CNHM15, #CHHM15, #CNVM15, #CVVM15



11 kW	n <sub>1</sub> : Motor Speed					
	Hz		50Hz		60Hz	
	P		4	6	4	6
	n <sub>1</sub>	r/min	1450	980	1750	1165

	50Hz					60Hz					Nomenclature			Page of Dimension Sheet							
	Output Speed n <sub>2</sub>	Output Torque Tout	Allowable Radial Load Pro		SF	Output Speed n <sub>2</sub>	Output Torque Tout	Allowable Radial Load Pro		SF	Input Capacity Symbol	Frame Size	Reduction Ratio	CNHM CHHM	CNFM CHFM	CNVM CVVM					
	r/min	N·m	kgf·m	N	kgf	r/min	N·m	kgf·m	N	kgf											
6.28	9270	945	84100	8570	*1	9270	945	84100	8570	*1	15 - 6205DB	- 231		B-112	B-129	B-148					
	12500	1270	104000	10600	*1	12500	1270	104000	10600	*1	15 - 6215DA	- 231		B-112	B-130	B-148					
	15100	1540	104000	10600	0.83	7.58	12500	1270	104000	10600	1.00	15 - 6215DA	- 231		B-112	B-130	B-148				
			137000	14000	0.98				130000	13300	1.08	15 - 6225DA	- 231		B-113	B-130	B-149				
			137000	14000	0.98				130000	13300	1.19	15 - 6225DB	- 231		B-113	B-130	B-149				
			172000	17500	1.25				163000	16600	1.51	15 - 6235DA	- 231		B-114	B-131	B-150				
			191000	19500	1.71				181000	18500	2.07	15 - 6245DA	- 231		B-114	B-131	B-150				
			233000	23800	2.06				221000	22500	2.48	15 - 6255DA	- 231		B-115	B-132	B-151				
			12500	1270	104000				10600	*1	12500	1270	104000	10600	*1	15 - 6215DA	- 273		B-112	B-130	B-148
			14800	1510	145000				14700	*1	14800	1510	137000	13900	*1	15 - 6225DA	- 273		B-113	B-130	B-149
5.31	17800	1810	144000	14700	0.83	6.41	14700	1500	137000	13900	1.00	15 - 6225DA	- 273		B-113	B-130	B-149				
			<b>179000</b>	<b>18200</b>	<b>1.06</b>				<b>171000</b>	<b>17400</b>	<b>1.28</b>	<b>15 - 6235DA</b>	<b>- 273</b>		<b>B-114</b>	<b>B-131</b>	<b>B-150</b>				
			201000	20500	1.45				190000	19400	1.75	15 - 6245DA	- 273		B-114	B-131	B-150				
			245000	25000	1.74				232000	23600	2.10	15 - 6255DA	- 273		B-115	B-132	B-151				
			276000	28100	2.58				276000	28100	3.12	15 - 6265DA	- 273		B-115	B-132	B-151				
4.55	12700	1290	104000	10600	*1	12700	1290	104000	10600	*1	15 - 6215DA	- 319		B-112	B-130	B-148					
	15000	1530	145000	14800	*1	15000	1530	142000	14500	*1	15 - 6225DA	- 319		B-113	B-130	B-149					
	20800	2120	179000	18200	0.91	5.49	17200	1760	177000	18100	1.10	15 - 6235DA	- 319		B-114	B-131	B-150				
			208000	21200	1.24				198000	20200	1.50	15 - 6245DA	- 319		B-114	B-131	B-150				
			258000	26300	1.56				244000	24900	1.88	15 - 6255DA	- 319		B-115	B-132	B-151				
276000	28100	2.21	276000	28100	2.67	15 - 6265DA	- 319		B-115	B-132	B-151										
3.85	15000	1530	145000	14800	*1	15000	1530	145000	14800	*1	15 - 6225DA	- 377		B-113	B-130	B-149					
	18900	1930	179000	18200	*1	18900	1930	179000	18200	*1	15 - 6235DA	- 377		B-114	B-131	B-150					
	24600	2510	<b>208000</b>	<b>21200</b>	<b>1.05</b>	4.64	20400	2080	<b>208000</b>	<b>21200</b>	<b>1.27</b>	<b>15 - 6245DA</b>	<b>- 377</b>		<b>B-114</b>	<b>B-131</b>	<b>B-150</b>				
			258000	26300	1.32				256000	26100	1.59	15 - 6255DA	- 377		B-115	B-132	B-151				
276000			28100	1.87	276000				28100	2.26	15 - 6265DA	- 377		B-115	B-132	B-151					
248000	25300	2.77	248000	25300	3.35	15 - 6275DA	- 377		B-115	-	B-151										
3.07	20500	2090	179000	18200	*1	20500	2090	179000	18200	*1	15 - 6235DA	- 473		B-114	B-131	B-150					
	30800	3140	208000	21200	0.84	3.70	25600	2600	208000	21200	1.01	15 - 6245DA	- 473		B-114	B-131	B-150				
			258000	26300	1.12				258000	26300	1.35	15 - 6255DA	- 473		B-115	B-132	B-151				
			276000	28100	1.49				276000	28100	1.80	15 - 6265DA	- 473		B-115	B-132	B-151				
			248000	25300	2.21				248000	25300	2.67	15 - 6275DA	- 473		B-115	-	B-151				
2.59	25800	2630	208000	21200	*1	25800	2630	208000	21200	*1	15 - 6245DA	- 559		B-114	B-131	B-150					
	36400	3720	258000	26300	0.95	3.13	30200	3080	258000	26300	1.14	15 - 6255DA	- 559		B-115	B-132	B-151				
			276000	28100	1.26				276000	28100	1.52	15 - 6265DA	- 559		B-115	B-132	B-151				
			248000	25300	1.87				248000	25300	2.26	15 - 6275DA	- 559		B-115	-	B-151				
2.23	25800	2630	208000	21200	*1	25800	2630	208000	21200	*1	15 - 6245DA	- 649		B-114	B-131	B-150					
	34500	3520	258000	26300	*1	34500	3520	258000	26300	*1	15 - 6255DA	- 649		B-115	B-132	B-151					
	42300	4310	258000	26300	0.82	2.70	35100	3570	258000	26300	0.98	15 - 6255DA	- 649		B-115	B-132	B-151				
			276000	28100	1.09				276000	28100	1.31	15 - 6265DA	- 649		B-115	B-132	B-151				
248000	25300	1.61	248000	25300	1.95	15 - 6275DA	- 649		B-115	-	B-151										
1.98	34500	3520	258000	26300	*1	34500	3520	258000	26300	*1	15 - 6255DA	- 731		B-115	B-132	B-151					
	47700	4860	276000	28100	0.97	2.39	39500	4030	276000	28100	1.16	15 - 6265DA	- 731		B-115	B-132	B-151				
			248000	25300	1.43				248000	25300	1.73	15 - 6275DA	- 731		B-115	-	B-151				
1.72	32500	3310	258000	26300	*1	32500	3310	258000	26300	*1	15 - 6255DA	- 841		B-115	B-132	B-151					
	54800	5590	276000	28100	0.84	2.08	45400	4630	276000	28100	1.01	15 - 6265DA	- 841		B-115	B-132	B-151				
248000			25300	1.24	248000				25300	1.50	15 - 6275DA	- 841		B-115	-	B-151					
1.45	46000	4690	276000	28100	*1	46000	4690	276000	28100	*1	15 - 6265DA	- 1003		B-115	B-132	B-151					
	65400	6670	<b>248000</b>	<b>25300</b>	<b>1.04</b>	1.74	54200	5520	<b>248000</b>	<b>25300</b>	<b>1.26</b>	<b>15 - 6275DA</b>	<b>- 1003</b>		<b>B-115</b>	-	<b>B-151</b>				
1.16	81300	8290	248000	25300	0.84	1.40	67400	6870	248000	25300	1.01	15 - 6275DA	- 1247		B-115	-	B-151				
0.980	68200	6950	245000	25000	*1	1.18	68200	6950	245000	25000	*1	15 - 6275DA	- 1479		B-115	-	B-151				

1. Combinations in **bold** are the recommended models for operations for 10 hours/day with uniform load (service factor is about 1.0 for motor rating at 50Hz).
2. Motor slippage may affect n<sub>1</sub> and n<sub>2</sub>. Refer to technical data for details.
3. CNHM, CHHM, CNFM, CHFM, CNVM, and CVVM indicate types. Refer to page B-10 for details.
4. Lubrication method is different for each model. Refer to "Lubrication" section in page F-4~F-5 for details.
5. "6" at the end of "input capacity symbol" indicates models with 6P motor. Other models come with 4P motor.